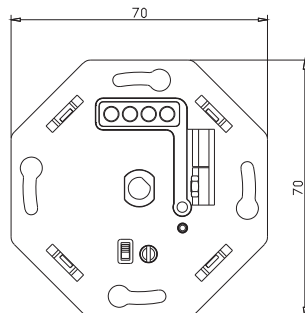
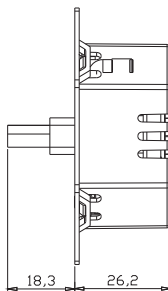


- ✓ Zigbee support
- ✓ Voice support
- ✓ Suitable for several home automation apps
- ✓ Support TouchLink, Find and bind
- ✓ Push / rotary button
- ✓ Suitable for 5-200VA LED
- ✓ Suitable for all well-known brands of cover frames
- ✓ Optimal dimmable & light stability
- ✓ Min. brightness adjustment options
- ✓ Suitable for 90% of dimmable LEDs
- ✓ Installation with provided 2 wires (no neutral wire required)
- ✓ Soft start system
- ✓ Noiseless dimming, no flicker
- ✓ Suitable for surface-mounted boxes & flush-mounted boxes with or without screw holes

1. TECHNICAL DATA

Rated Voltage	220V-240V ~ 50Hz
LED Power	200VA
Input current	0.87A
Controls	Push on/off, Rotary Dim
Dimming Technology	Trailing Edge
Control Mode	Multi-way (Master/Slave)
Support load type	Dimmable LEDs 5-200VA
	Incandescent 5-300W
	HV Halogen 5-300W
Protocol	Zigbee 3.0
Operating Temp.	-20 °C-40°C
Dimention	70.6x70.6x26.2mm



2. INSTALLATION

WARNING: Read all Instructions Prior to Installation.

Step 1. Disconnect power to the relevant circuit at the main switchboard.

Step 2. Remove existing switch from wall.

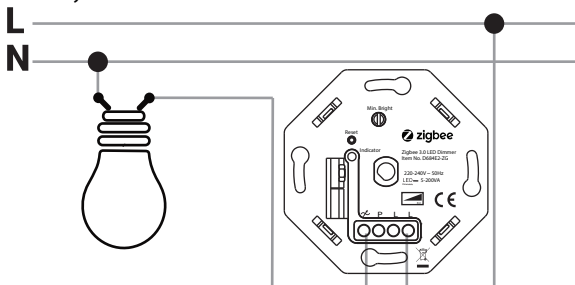
Step 3. Connect the dimmer in accordance with the wiring diagrams shown below.

Step 4. Refit switch plate to wall.

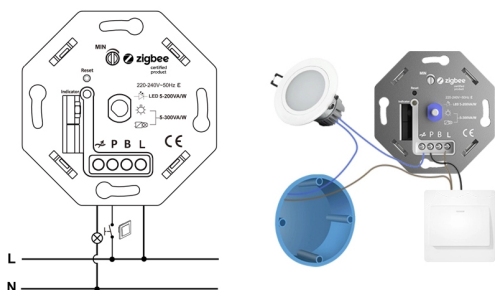
Step 5. Reconnect power.

Step 6. Turn switch on and check dimmer operation by turning control knob through full range.

One way Connection:



Multi-way (Master/Slave) Connection:



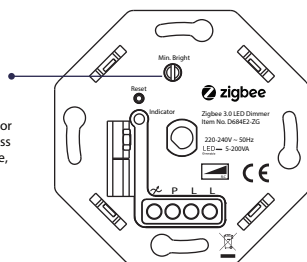
3. Operation

1) Min. Brightness Adjustment.

To ensure the dimmer to work optimally, you can adjust the lights brightness at min. level through the Min Bright switch.

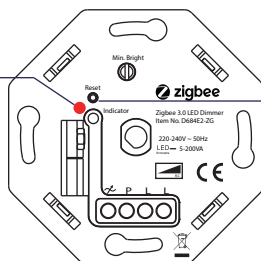
Min. bright adjustment

When the light is on and at the previous set min. level, Anti-clockwise the VR to decrease or clockwise to increase the brightness at the min. level to your preference, and avoid flickering as well.



2) Factory Reset

Step 2. When the Indicator stay in Red for 10s, reset finished.



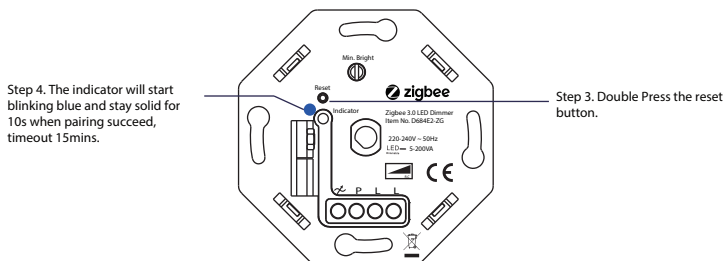
Step 1. Press the reset button for 5s.

Please Note: All configuration will be reset after the device is reset or remove from the network.

3) Inclusion to the Zigbee Network

Step 1. Remove the device from previous Zigbee network if it has already been added to, otherwise pairing mode will be fail.

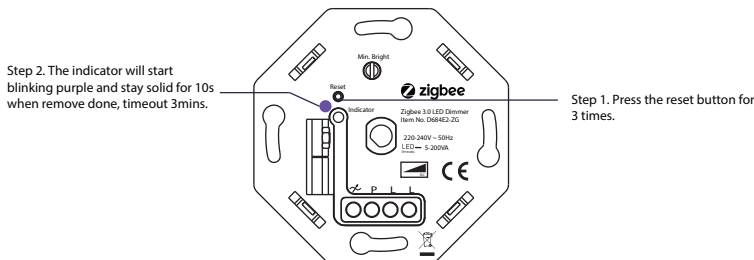
Step 2. From your Zigbee Controller interface, choose to add lighting and enter the pairing mode.



4) Exclusion from the Zigbee Network

Method 1. From your Zigbee hub interface, choose to delete or reset the device as instructed.

Method 2. Remove from the Device, see below instructions.

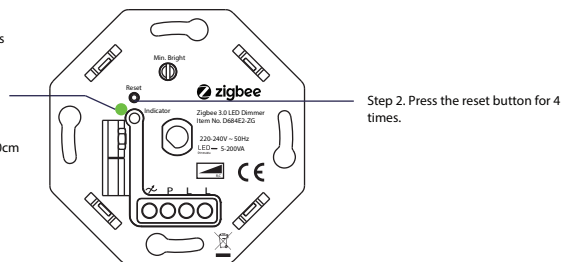


5) TouchLink Reset/remove both device from Zigbee Network.

Step 1. Remove the device if it is included in a Zigbee network before activate TouchLink.

Step 3. The indicator will start blinking blue and stay solid for 10s when pairing succeed, timeout 15mins.

Step 4. Bring the remote within 10cm of the smart dimmer and set the remote into TouchLink commissioning.

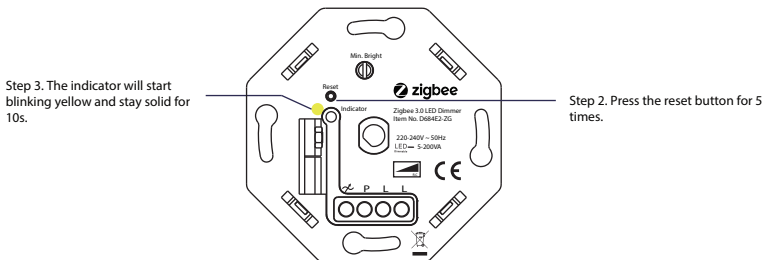


Note:

- a. When both devices (Dimmer and remote) not included in the Zigbee Network, each dimmer can link with up to remote.
- b. When both devices are included in the same Zigbee network, each dimmer can link with up to 30 remotes.

6) Find and Bind Mode

Step 1. Make sure the device and remote already added to the same Zigbee network.



4. Zigbee Clusters the device supports are as below

1) Input Cluster

- 0x0000: Basic
- 0x0003: Identify
- 0x0004: Groups
- 0x0005: Scenes
- 0x0006
- 0x0008
- 0x0b05

2) Output Cluster

- 0x0019: OTA

5. Support Hub/Platform

Suitable for most Zigbee hubs / apps:

- ✓ Homey
- ✓ SmartThings
- ✓ Philips Hue
- ✓ Google Home
- ✓ Amazon Alexa
- ✓ Wink
- ✓ Homee
- ✓ Futurehome
- ✓ Aduro Smart
- ✓ Trust Smart Home



Please refer to Corresponding hub manual /instruction to learn how

6. Safety

- ! DO NOT Install with power applied to device
- ! DO NOT expose the device to moisture.
- ! DO NOT open the dimmer in case any damages that out of repair.

7. Warranty

Within 2 years after sale any faults caused by non-artificial reason will be maintain freely.

8. Declaration of Conformity

We hereby certified that the device satisfies the previsions for CE/Nemko marking in accordance with the EU directives(LV Directive 2014/35/EU, EMC Directive 2014/30/EU, RoHS Directive(EU) 2015/863 amending 2011/65/EU) as described below.

EMC Standard(EMC)

EN 60669-2-1: 2004+A1:2009+A12:2010(Clause 26)

EN 55015: 2013+A1:2015

EN IEC 61000-3-2:2019

EN 61000-3-3:2013+A1:2019

EN 61547:2009

EN 62493:2015

Safety Standard(LVD)

EN 60669-1: 2018

EN 60669-1: 1999+A1:2002+A2:2008

RoHS Standard(RoHS)

Directive(EU)2015/863 amending 2011/65/EU