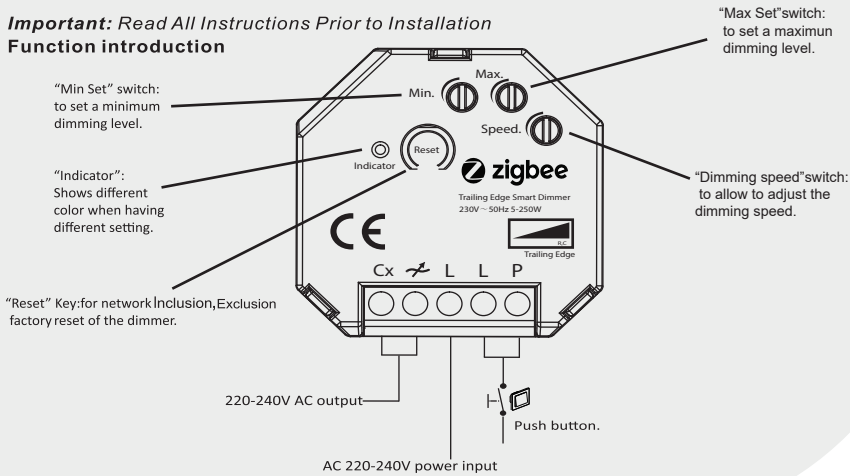


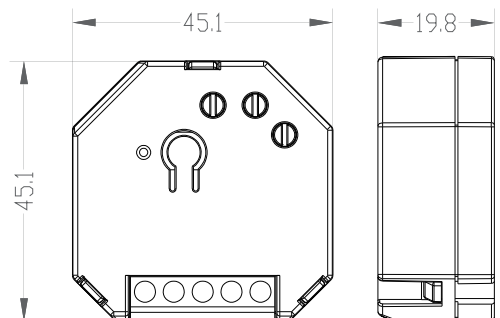
Important: Read All Instructions Prior to Installation
Function introduction



- ✓ Zigbee support
- ✓ Suitable for several home automation apps
- ✓ Works with push-button (momentary switch)
- ✓ Optimal dimmable & light stability
- ✓ Suitable for 5-250VA LED
- ✓ Saves and restores the last status after a power failure
- ✓ MIN and MAX light adjustment and dimming speed
- ✓ Suitable for 90% of dimmable LEDs
- ✓ Does not require a neutral line, also 3 wire connection available
- ✓ Soft start system
- ✓ Noiseless dimming, no flickering.

1. Specifications

Input voltage	220V-240V ~ 50Hz
Power (load)	5-250VA LED
	5-250W Halogen/incandescent bulbs
Protocol	Zigbee 3.0
Type dimmercontrol Mode	R,C Phase cut
Working temperature	-20 C - 40 C
Operation	Push Dimming by Momentary Switch
Dimensions	45.1*45.1*19.8mm
Weight	35.4g



2. Installation

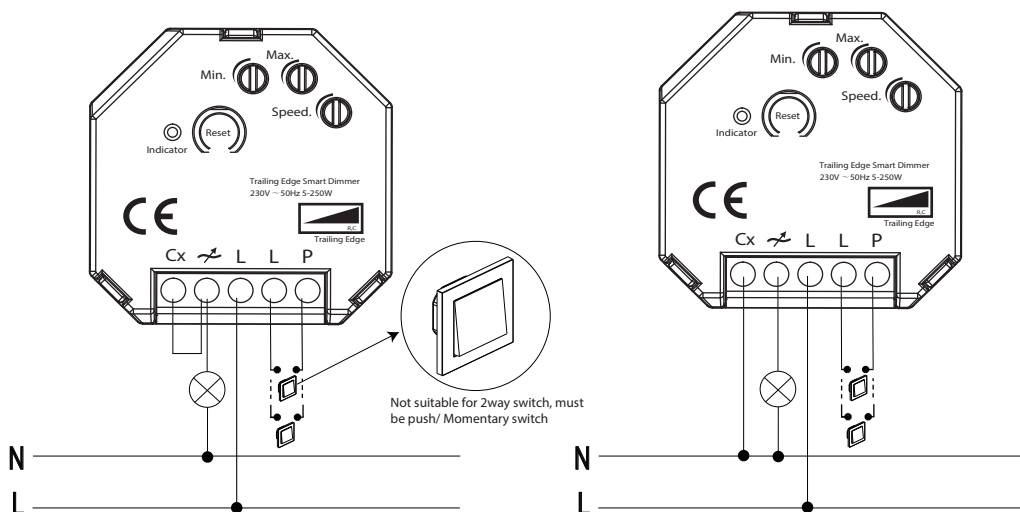
1). Turn off the power

To avoid electrical shock and/or equipment damage, disconnect electrical power at the main fuse or circuit breaker before installation and maintenance. Be aware that even if the circuit breaker is off, some voltage may remain in the wires — before proceeding with the installation, be sure no voltage is present in the wiring. Take extra precautions to avoid accidentally turning the device on during installation.

2). Connect the device exactly according to the diagrams shown below

This dimmer is available for 2wire and 3-wire system. please note if it is 2wire, N and Load terminal must be connected to make stable dimming.

3). Turn the power back



3. Operation

1) Min./Max./Dimming Speed adjustment

For the SMART dimmer to work optimally or suitable for your preference, you can adjust the brightness at the Min. and Max. level and the dimming speed can also be adjusted through speed switch.

- MIN adjustment : Switch on the lights. When the lights are on, insert a screwdriver in MIN and turn it to the left. When the light becomes unsteady, turn it slightly back to the right till the light remains steady.
- MAX adjustment : Switch on the lights. When the lights are on, insert a screwdriver in MAX and turn it to the right. When the light becomes unsteady, turn it slightly back to the left till the light remains steady.
- Dimming Speed adjustment: Insert a screwdriver in Speed, turn it clockwise to increase the dimming speed and vice versa.

4. Zigbee Cluster

1) Input Cluster

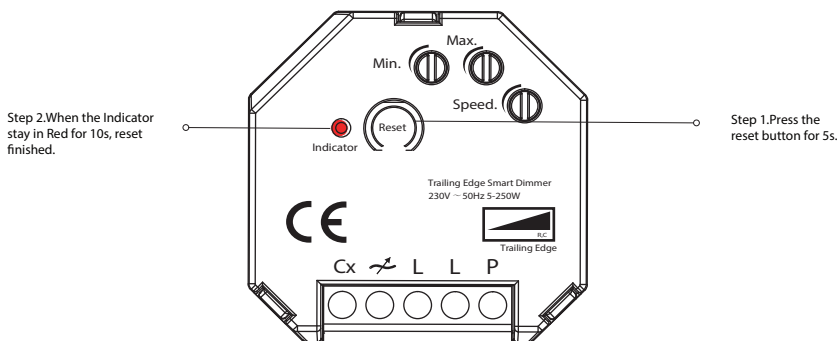
- 0x0000: Basic
- 0x0003: Identify
- 0x0004: Groups
- 0x0005: Scenes
- 0x0006: On/off
- 0x0008: Level Control
- 0x0b05: Diagnostics

2) Output Cluster

- 0x0019: OTA

5. Zigbee Setting

1). Factory Reset



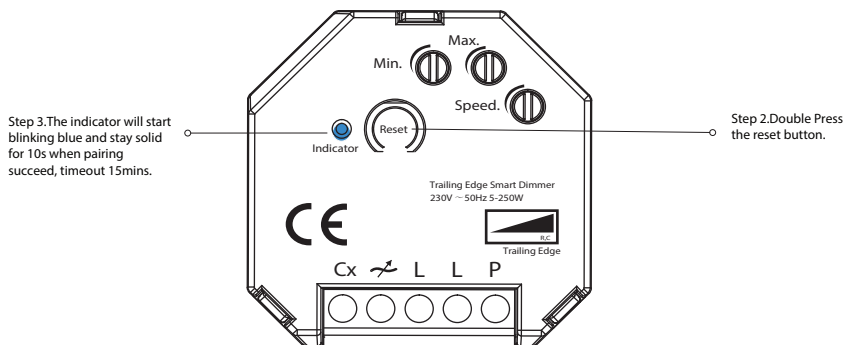
Please Note:

This procedure should only be used when the primary controller is inoperable or otherwise missing.

Reset Dimmer controller to factory default settings will set the Dimmer to not in Zigbee network state, delete the Association setting and restore the Configuration setting to the default.

2). Inclusion to a Zigbee Network

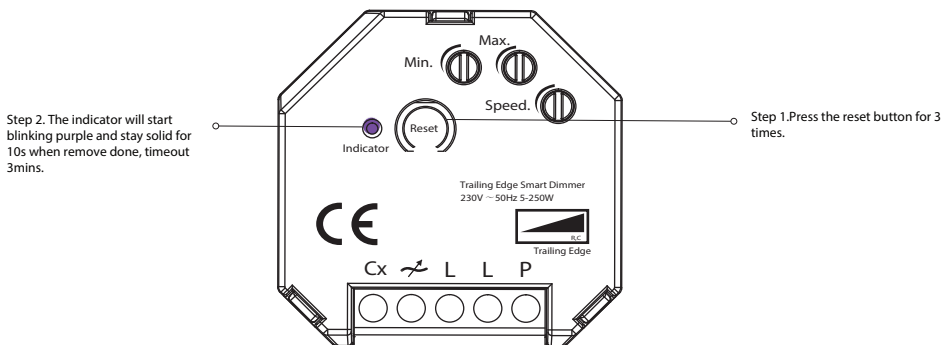
Step 1. Remove the device from previous Zigbee network if it has already been added to, otherwise pairing mode will be fail.



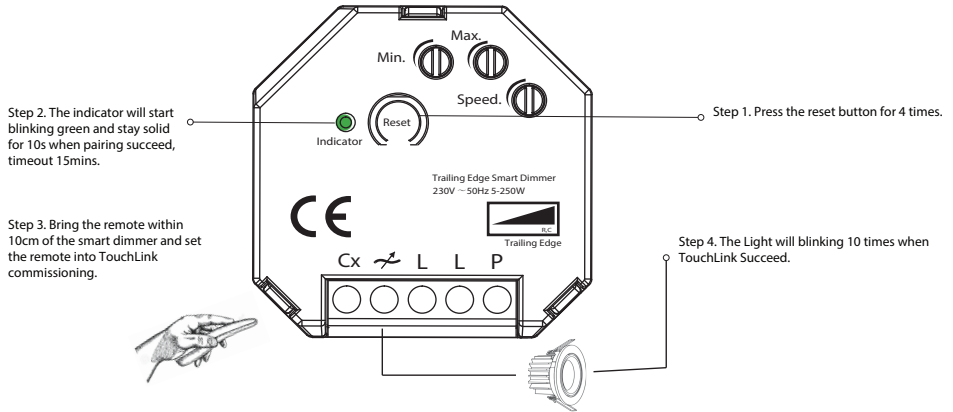
3). Remove from a Zigbee Network

Method 1. From your Zigbee hub interface, choose to delete or reset the device as instructed.

Method 2. Remove from the device, see below instructions.



4). TouchLink

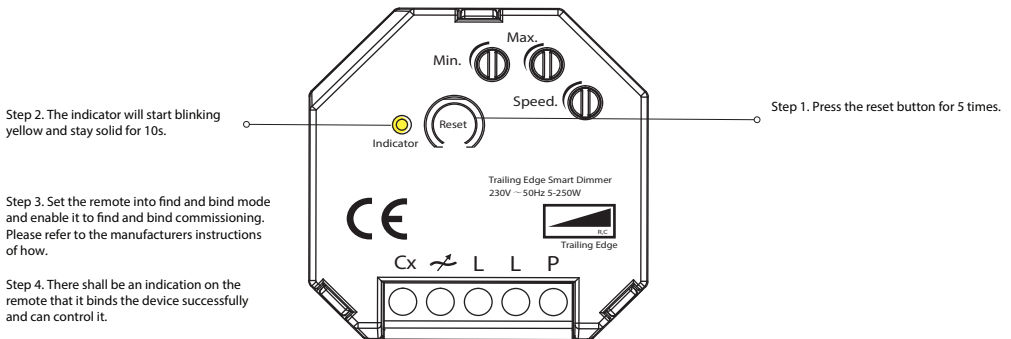


Note:

- a. When both devices (Dimmer and remote) not included in the Zigbee Network, each dimmer can connect up to 1 remote control.
- b. When both devices are included in the same Zigbee network, each dimmer can connect up to 30 remote controls.
- c. For Philips Hue Hubs and Amazon Echo Plus, first, add remote and device to network, and then touchlink.

5) Find and Bind

Note: Make sure the device and remote already added to the same Zigbee network



6. Support Hub/Platform

Suitable for most Zigbee hubs / apps:

- ✓ Homey
- ✓ SmartThings
- ✓ Philips Hue
- ✓ Google Home
- ✓ Amazon Alexa
- ✓ Wink
- ✓ Homee
- ✓ Futurehome
- ✓ Aduro Smart
- ✓ Trust Smart Home

Please refer to Corresponding hub manual /instruction to learn how

7. Declaration of Conformity

We hereby certified that the device satisfies the provisions for CE/Nemko marking in accordance with the EU directives(LV Directive 2014/35/EU, EMC Directive 2014/30/EU, RoHS Directive(EU) 2015/863 amending 2011/65/EU) as described below.

EMC Standard(EMC)

EN 60669-2-1: 2004+A1:2009+A12:2010(Clause 26)

EN 55015: 2013+A1:2015

EN IEC 61000-3-2:2019

EN 61000-3-3:2013+A1:2019

EN 61547:2009

EN 62493:2015

Safety Standard(LVD)

EN 60669-1: 2018

EN 60669-1: 1999 +A1:2002+A2:2008

RoHS Standard(RoHS)

Directive(EU)2015/863 amending 2011/65/EU

8. Safety

! DO NOT Install with power applied to device

! DO NOT expose the device to moisture.

! DO NOT open the dimmer in case any damages that out of repair.

9. Warranty

Within 2 years after sale any faults caused by non-artificial reason will be maintain freely.