

QUICKSTART



GB Z-WAVE SYSTEM

2

**Quickstart instructions for the Z-Wave system
(without wireless switching centre/server)**



düwi®
WIRELESS SYSTEM Z-WAVE

**WIRELESS SYSTEM Z-WAVE QUICKSTART
Installation and user manual**

Dear customer,

Thank you for buying our product.

Please read the following user manual carefully prior placing the Z-Wave wireless system in operation and keep it in a safe place for later reference.



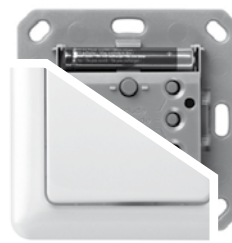
Please note that the remote control you use first to include your devices is your main remote control (primary controller). You can only add or remove devices using this controller. If this device is lost or damaged, it will be necessary to re-configure the entire system. We recommend the usage of a remote control or a wireless switching centre/server as the primary controller. On the installation of more complex systems, e.g. on the usage of several controllers (remote controls/wall transmitters) we generally advise the usage of a wireless switching centre/server (art. no. 05447⁴)



düwi wireless switching centre/server
art. no. 05447⁴

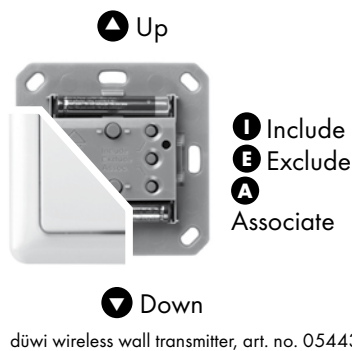
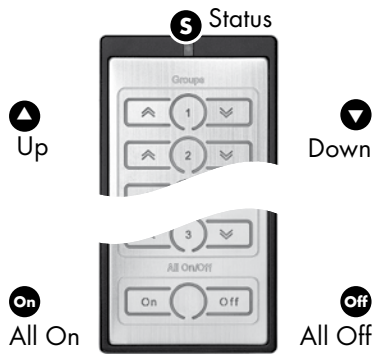


düwi wireless remote control
art. no. 05445⁰



düwi wireless wall transmitter
art. no. 05443⁶

FUNCTION BUTTONS ON THE düwi CONTROLLER













düwi wireless remote control, art. no. 05445⁰



düwi wireless switching centre/server, art. no. 05447⁴

LED INDICATIONS

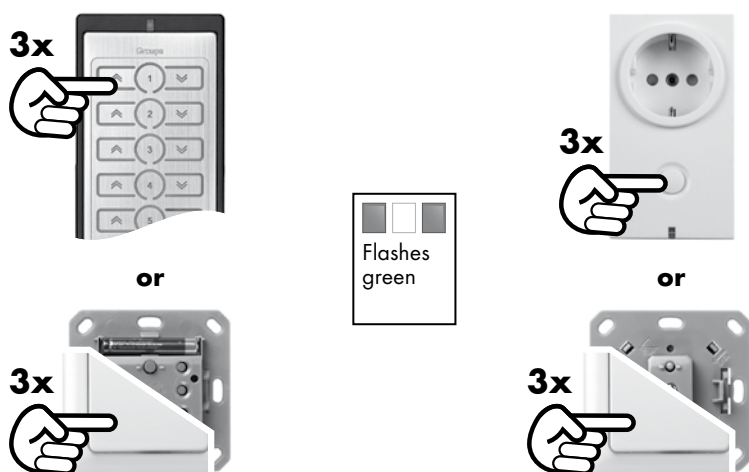
Due to the colour LED indication on transmitters and receivers it is possible at any time to obtain feedback on the success/failure of a switching command or a configuration step, to specifically enquire about the status of devices, or to monitor the switching status or the functionality of devices.

	Yellow	Device/group/scene is switched on
	Blue	Device/group/scene is switched off
	Red	Device/group/scene erroneous Configuration not successful Out of range
	Yellow flashing	Dimmer increasing brightness
	Blue flashing	Dimmer reducing brightness
	Green	Configuration successful
	Green flashing	Configuration active
	Red flashing	Low battery in the network/child protection active/temperature too high
	Red/green	Device not programmed
	Red/yellow/green	Reset in progress

Combinations are possible within a group.

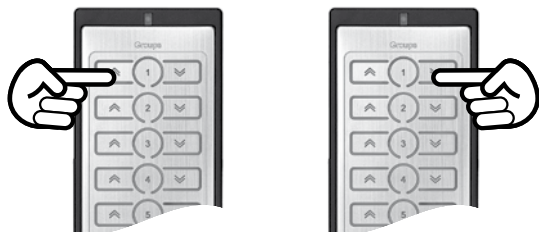
1. DIRECT INCLUSION OF DEVICES IN A GROUP/SCENE (INCLUDE) / ALLOCATION OF DEVICES TO AN ADDITIONAL REMOTE CONTROL

- Press 3x the required group/scene on the remote control or the wall switch (LED flashes green), then 3x on the device that is to be included. The device is automatically allocated to the group/scene (LED illuminates green).



2. SWITCHING AND DIMMING

- Press the "UP" button briefly to switch on or press it for longer to increase the brightness of the group.
- Press the "DOWN" button briefly to switch off or press it for longer to reduce the brightness of the group.



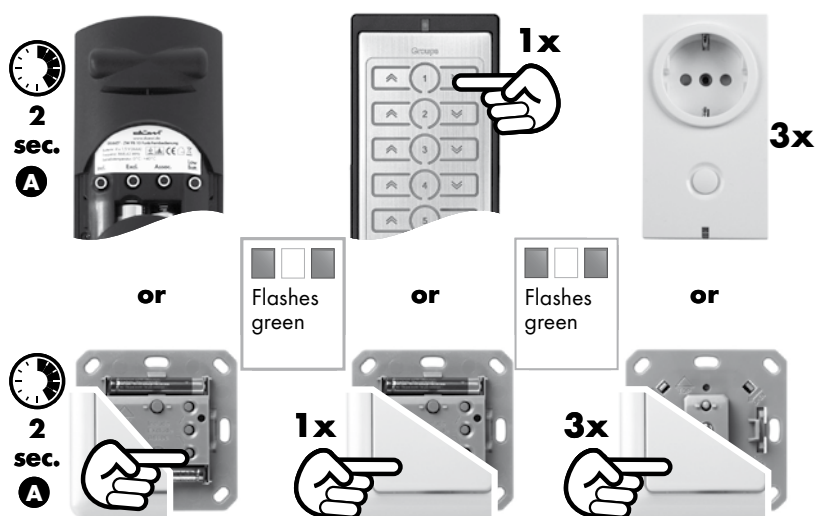
3. STATUS ENQUIRY (CHECKING THE SWITCHING STATUS)

- By pressing the related middle (status) button you can display the switching status of all devices in a group using the LED on the remote control.



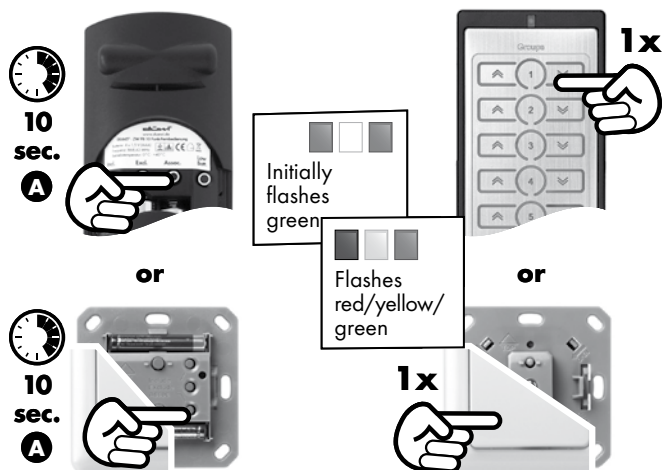
4. REMOVING DEVICES FROM A GROUP/SCENE (DEVICES REMAIN IN THE NETWORK = DISASSOCIATION)

- Press for 2 seconds the "Associate" **A** button on the related controller (LED flashes green quickly).
- Press 1x the "DOWN" button for the related group/scene or press flush mounted switch (LED flashes green slowly).
- Press 3x the function button on the device (LED illuminates green).



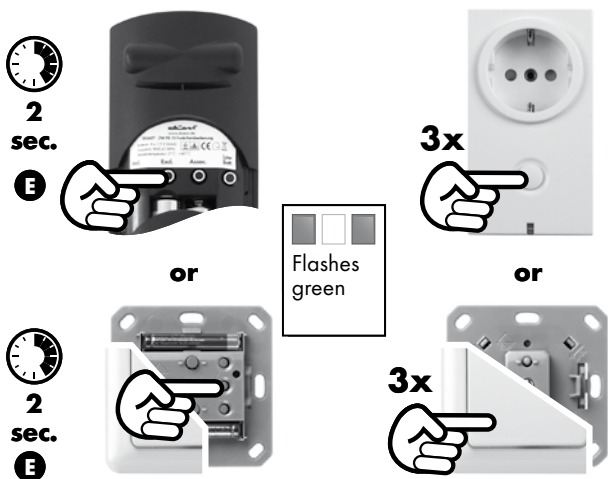
5. DELETING A COMPLETE GROUP/SCENE (DEVICES REMAIN IN THE NETWORK = DISASSOCIATION)

- Press for 10 seconds the "Associate" **A** button on the related controller (LED initially flashes green quickly).
- When LED flashes red/yellow/green, press 1x the "DOWN" button for the related group/scene or press flush mounted switch.



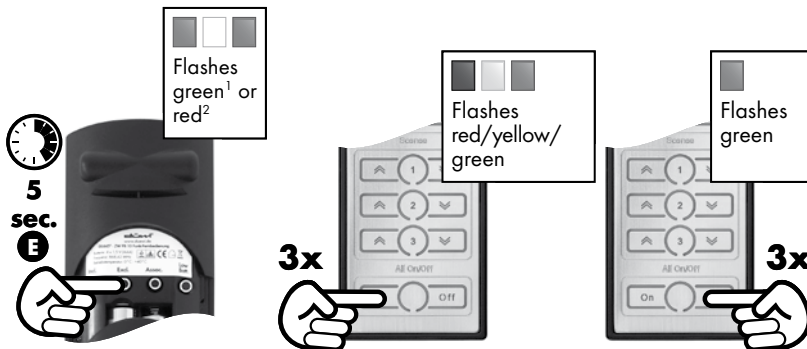
6. REMOVING A DEVICE FROM THE NETWORK (RESET DEVICE OR EXCLUDE DEVICE FROM THE NETWORK)

- Press for 2 seconds the "Exclude" **E** button on the related controller (LED flashes green).
- Press 3x the function button on the device.



7. RESETTING CONTROLLER (RESET DEVICE + DEVICE OUT OF NETWORK)

- Press for 5 seconds the "Exclude" **E** button. LED initially flashes green (¹on the primary controller) or red (²on the secondary controller).
- When LED flashes red/yellow/green, press 3x "All On" button, then 3x "All Off" button (on the wall transmitter 3x "UP", then 3x "DOWN" button).



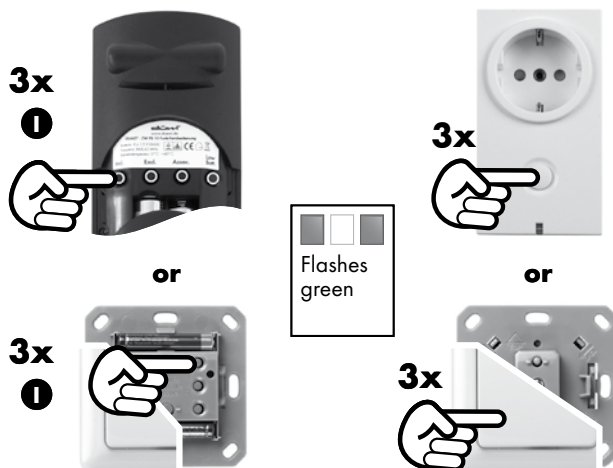
8. ADDING FURTHER DEVICES AND CONTROLLERS



It is recommendable to first include all devices in the network using the primary controller, before additional controllers are added.



8.1 INCLUDING DEVICES ON ADDITIONAL CONTROLLERS

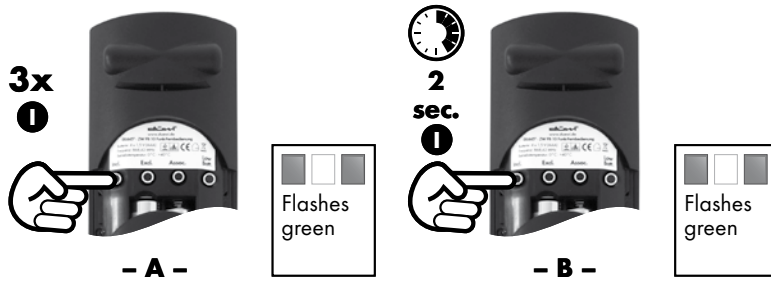
- Press 3x the "Include" **I** button on the primary controller (LED flashes green).
- Press 3x function button on the device.



After you have included new devices into the network using the primary controller, these must be made known to the controllers (see 8.2) via an update. Then these devices can be allocated to the required groups and scenes on these controllers (remote controls) (see 1).

8.2 INCLUDING ADDITIONAL CONTROLLERS (WALL TRANSMITTER, REMOTE CONTROL) INCLUDE AND REPLICATION

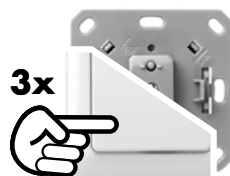
- Press 3x the "Include"  button on the primary controller (LED flashes green).
- Press for 2 seconds the "Include"  button on the additional controller (remote control or wall transmitter) (LED flashes green).



If new devices are included into the network, it is recommendable to repeat this process so that all controllers have current network data and to ensure stable network function (replication).

9. INCLUDING düwi DEVICES IN NETWORKS FROM OTHER MANUFACTURERS

- Start the inclusion process on the responsible controller in your network and then press 3x on the device to be included.



For further information on the procedure for inclusion, please read the documentation from the manufacturer of the related device.

10. INCLUDING DEVICES FROM OTHER MANUFACTURERS IN THE düwi Z-WAVE NETWORK

- Start the inclusion process on the düwi wall transmitter or on the düwi controller as described above.
- Send the integration information for the device to be integrated to the wall transmitter or to the controller.



For information on sending inclusion information (on düwi device press the function button 3x) please refer to the documentation from the manufacturer.

10. INCLUDING DEVICES FROM OTHER MANUFACTURERS IN THE düwi Z-WAVE NETWORK

- Start the inclusion process on the düwi wall transmitter or on the düwi controller as described above.
- Send the inclusion information for the device to be included in the wall transmitter or the controller.



For information on sending inclusion information (on düwi device press the function button 3x) please refer to the documentation from the manufacturer.

11. INTEROPERABILITY OF DEVICES FROM DIFFERENT MANUFACTURERS



- In principle it is possible to combine devices from various manufacturers and different function groups such as lighting, multimedia, heating and air-conditioning, home entertainment.
- Due to the common "Speaks Z-Wave" certification communication and interaction between individual devices is ensured.
- If you have questions as to the limitations on the usage of specific devices together, please contact the related manufacturer.

12. INCREASE IN THE NETWORK QUALITY

- In principle the düwi products can use any device that is operated with mains voltage as an amplifier for incoming messages (routing function).
- If the routing function is supported, information is forwarded to the nearest network nodes resulting in an increase in the maximum range of the wireless path and stable function of the entire network.